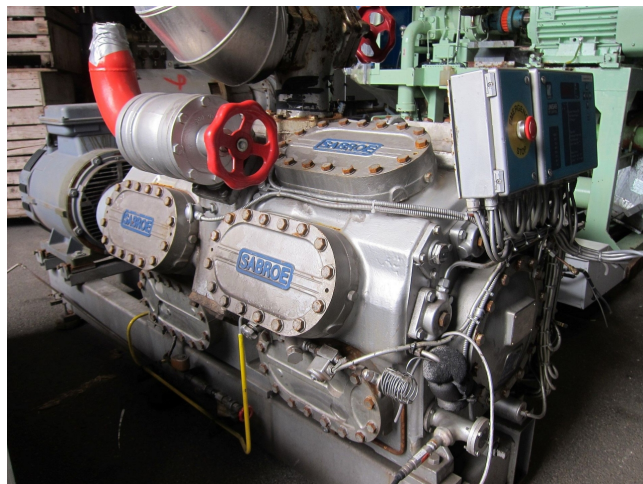


# Sabroe SMC 116 SLP MK3 package

## Specifications

|                            |                                      |
|----------------------------|--------------------------------------|
| Marka                      | Sabroe                               |
| Typ                        | SMC 116 SLP MK3 package              |
| Czynnik chłodzący          | Freon                                |
| kW at -30°C/+40°C          | 153                                  |
| kW at -40°C/+40°C          | 70,7                                 |
| Silnik elektryczny Specs   | 90                                   |
| Rozładunek                 | ✓                                    |
| Kontrolka wydajności       | ✓                                    |
| Podstawa na stalowej ramie | ✓                                    |
| Panel kontrolny            | ✓                                    |
| Uwagi                      | # // Electromotor: 90 kW at 1470 RPM |
| Rozmiary                   | 2900x1100x1600 mm (LxWxH)            |
| Stock                      | 2                                    |



## Description

### Used Sabroe SMC 116 SLP MK3 package

Used Sabroe SMC 116 SLP MK3 package, complete with unloaded start, capacity control and control panel. This unit has a cooling capacity of 153 kW at -30°C/+40°C.

Why choose for HOSBV? We're not only the largest used refrigeration specialist in Europe, but also, we deliver all equipment including an extensive test, warranty and industrial cleaning. \*Optional we can also perform a new paint job and arrange the logistics.

